



YUNEX Technical Bulletin STAB22-0135

ST950, Stratos Outstation, Sicore II
Viewing Export Site Information

YUNEX
TRAFFIC

Introduction

The ST950, Stratos Outstation and Sicore II camera provide a function to 'Export Site Information' as a ZIP file. This ZIP file contains detailed information about the equipment, such as configuration settings and fault logs that can be viewed in a browser offline. However, some of the files can no longer be viewed by modern browsers because of new security checks that restrict local files and pages.

This technical bulletin contains a workaround.

Priority of Change: *For information only*

Scope

The issue affects all versions of the ST950 Traffic Controller, Stratos Outstation and Sicore II camera.

Procedure

The following steps show how the Microsoft Edge browser can be used to view the contents of the ZIP file created by the 'Export Site Information' feature of ST950 Traffic Controllers, Stratos Outstations and Sicore II camera.

Step 1: Export Site Information

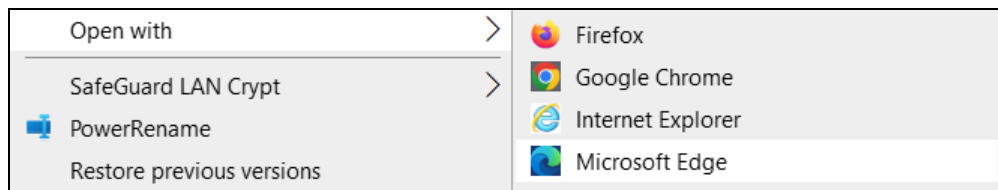
From the 'System' web page, use the Export Site Information button as normal to generate and download the ZIP file.

Step 2: Unpack the ZIP file

Unpack the contents of the ZIP file into a temporary folder.

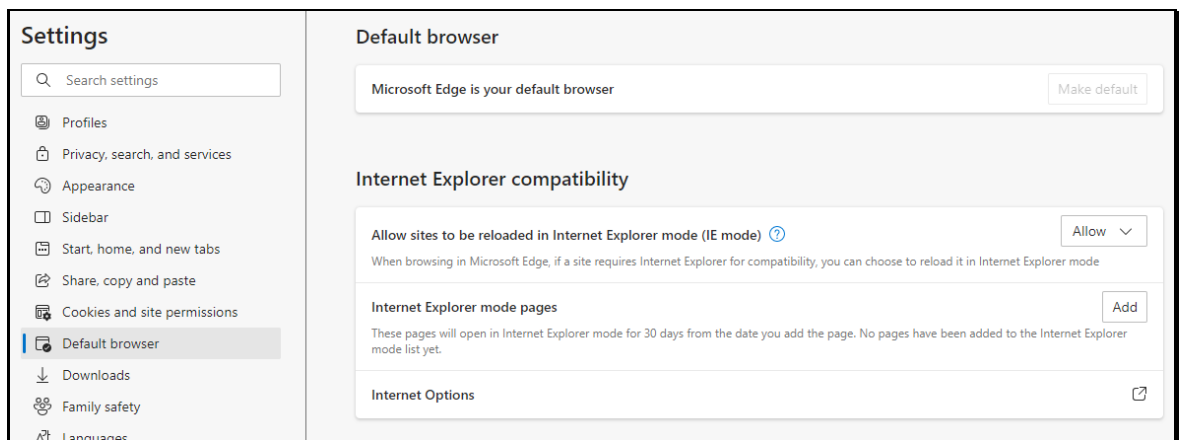
Step 3: Open the index.html in Microsoft Edge

If Microsoft Edge is not the default browser, right-click on the **index.html** file and select '**Open with**' and then '**Microsoft Edge**'.



Step 4: Check the 'IE mode' settings in Edge

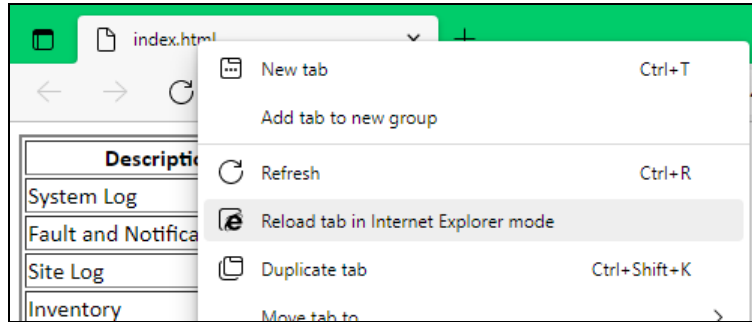
In Microsoft Edge, open the '**Settings**', and select '**Default browser**' from the menu on the left. Check the option '**Allow sites to be reloaded in Internet Explorer mode (IE mode)**' is set to '**Allow**' as shown below.



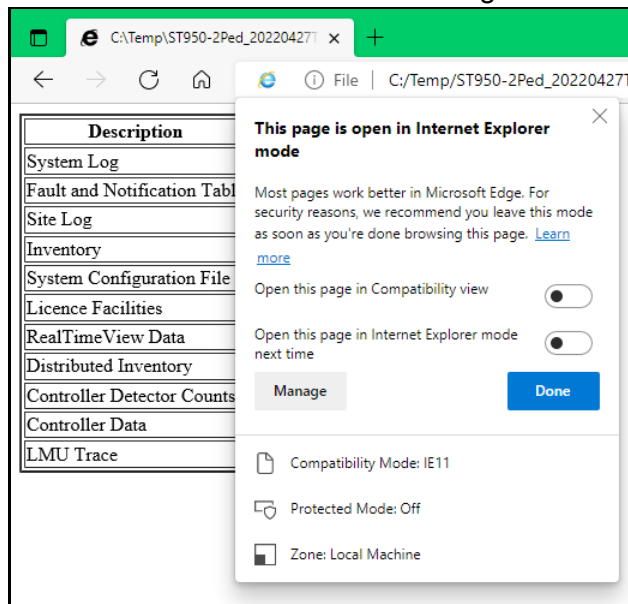
Close the 'Settings' tab.

Step 5: Select Internet Explorer mode

In Microsoft Edge, right-click on the tab for **index.html** and select the option '**Reload tab in Internet Explorer mode**'.

**Step 6: Acknowledge the message**

Click the 'Done' button to acknowledge the message. The other options in this box should not need to be changed.

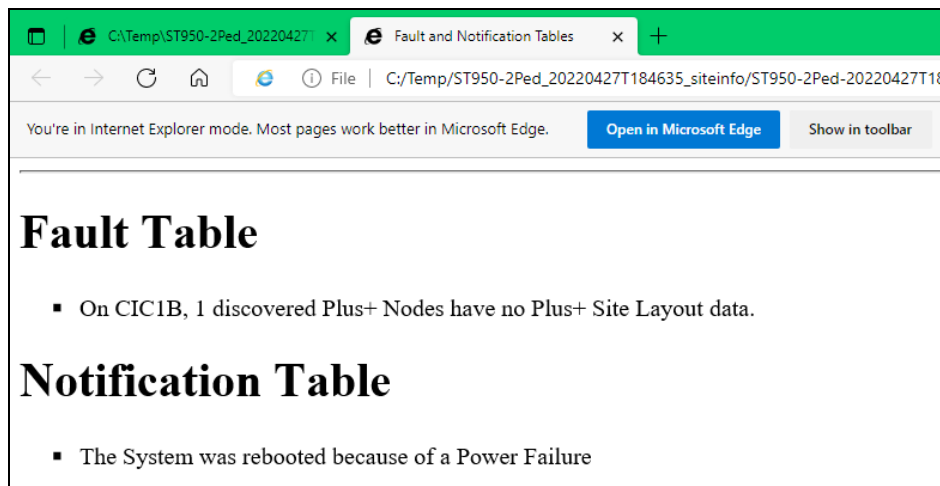
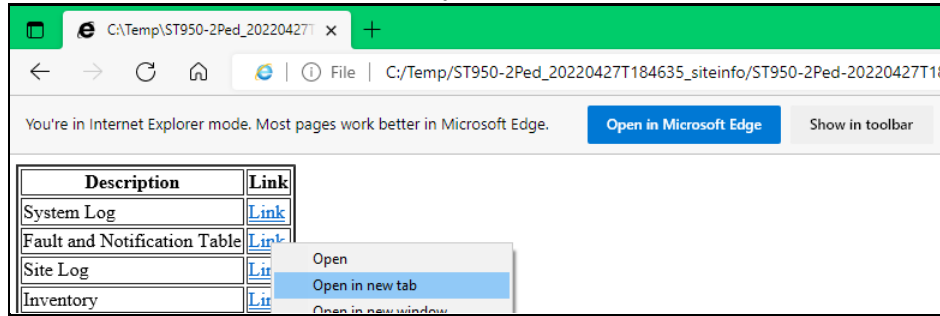


Note: Other tabs opened in Microsoft Edge continue to operate normally and are unaffected by selecting Internet Explorer mode option on this tab.

Step 7: Click on the link in the index to view the contents

Click on the various [Link](#) options in the table to view the individual documents.

If the documents are open in another tab by right-clicking on the [Link](#) and selecting 'Open in new tab', those tabs automatically open in Internet Explorer mode too.

**Step 8: Close the tabs when finished**

Related Documents

- 667/HU/46000/000 User Interface Handbook for ST950 and Stratos Outstation
- 667/HB/52600/000 Sicore II Installation and Commissioning Guide